



Product Description

iPSC-Derived Retinal Pigment Epithelial Cells (iRPEs) provide a physiologically relevant model for studying retinal biology, disease mechanisms, and therapeutic development. Derived from human induced pluripotent stem cells, iRPEs closely mimic primary RPE cells, which are essential for supporting photoreceptor function and maintaining retinal homeostasis. Each lot is rigorously characterized by strong RPE65 expression and validated by formation of tight junctions demonstrated by ZO-1 staining, ensuring high quality and reproducibility.

We are developing a panel of iRPEs derived from iPSCs from patients with retinal diseases, creating powerful models for translational research and drug discovery.

iPSC-derived RPE cells (iRPEs) are ideally suited for studies of retinal development, disease modeling, drug screening, cell therapy testing, and regenerative medicine applications, offering a reliable resource for advancing vision research.

Stability and Storage

Upon receipt, immediately transfer the cells from dry ice to liquid nitrogen storage, and maintain them in liquid nitrogen until ready for experimental use.

Shipping

Cryopreserved cells are shipped on dry ice. Live cells are shipped at ambient temperature.

Product Use

The products are for research use only. They are not approved for human or animal use, or for application in in vitro diagnostic procedures.

Contact Us

www.i-linkbio.com
sales@i-linkbio.com

iPSC-Derived Retinal Pigment Epithelium (RPE) Cell Kit (Normal, Diseased, Engineered)

Quality Control:

Catalog Number	ILC-2010
Organism	<i>Homo sapiens</i>
Donor/Tissue/Medical History	See CoA for the detailed information
Product Format	Cryopreserved, or Live Cell Culture
Culture Properties	Adherent
Total Cell Number	1x10 ⁶ cells/vial
Viability	>90%
Human Pathogen	Negative
Bacterial, Fungi, Mycoplasma	Negative
Biomarker Expression	Positive (>90% of RPE65+)
Neuron and Glial Differentiation	Pass

Representative Dataset:

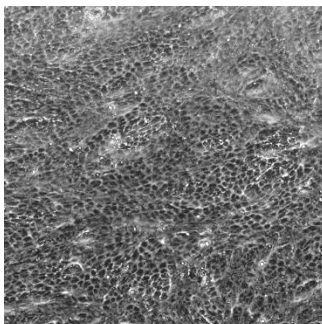


Figure 1. Bright Field Image of iRPE cells.

Cell Thawing and Culture Protocol:

1. Thaw the cells rapidly in a 37 °C water bath.
2. Transfer the thawed cells into a 15 mL conical tube.
3. Gently add 2 mL of iRPE Culture Media (Cat# ILC0010M) to the tube.
4. Centrifuge at 200 × g for 2 minutes at room temperature.
5. Carefully aspirate the supernatant.
6. Resuspend the cell pellet in 2 mL of iRPE Culture Medium.
7. Seed the cells onto Matrigel-coated plates (typically, one vial yields 1 well of a 6-well plate).
8. Gently distribute the cells evenly across the wells.
9. Incubate overnight at 37 °C in a CO₂ incubator.
10. Change media daily until the cells grow confluent and form tight junction.

Related Products:

iRPE Culture Medium (Catalog Number: ILC0010M) is specifically formulated to support iPSC-derived retinal pigment epithelial cell (iRPE) recovery and expansion.